



MONT CERVIN PALACE

\*\*\*\*\*



## RESIDENCE 1 & 2



Mont Cervin Palace > Bahnhofstrasse 31 > CH-3920 Zermatt

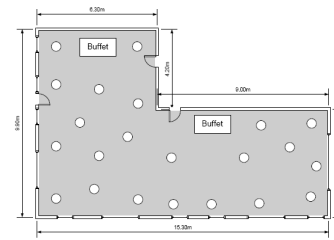
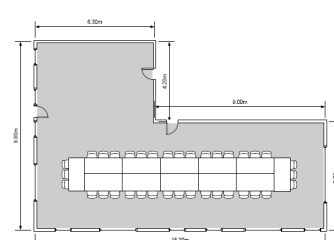
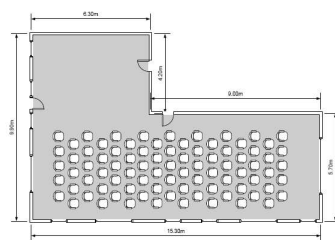
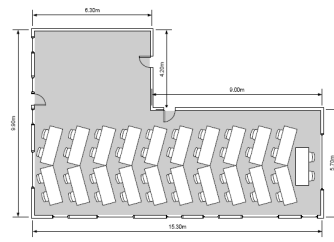
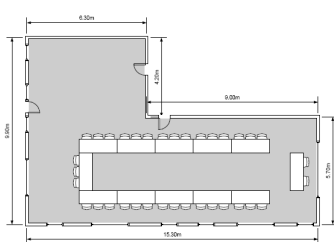
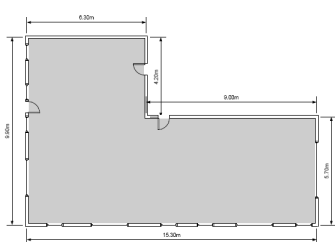
T: +41 (0)27 966 88 88 > F: +41 (0)27 966 88 99 > [www.montcervinpalace.ch](http://www.montcervinpalace.ch) > [mcp.events@seilerhotels.ch](mailto:mcp.events@seilerhotels.ch)



# MONT CERVIN PALACE

★★★★★

Residence 1 & 2	L x B x H (in m)	m <sup>2</sup>							
	6.2/9.0 x 9.8 x 2.2	112.6	35	41	80	-	35	130	



Technische Infrastruktur auf Anfrage.  
*Technical infrastructure upon request.*  
Infrastructure technique sur demande.