



MONT CERVIN PALACE

\*\*\*\*\*



## POOL FOYER









Mont Cervin Palace > Bahnhofstrasse 31 > CH-3920 Zermatt

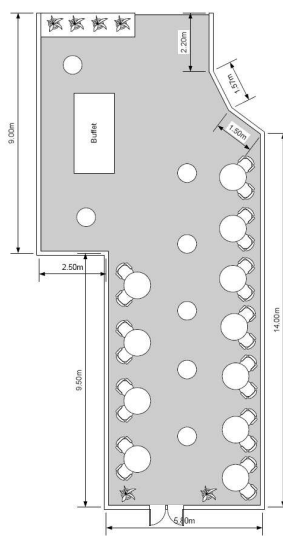
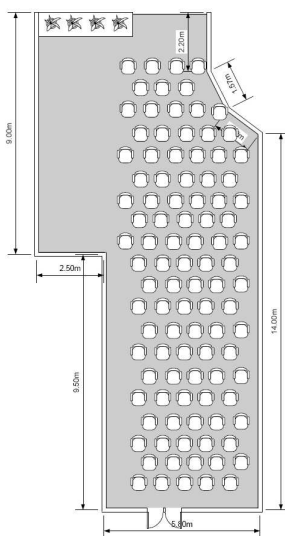
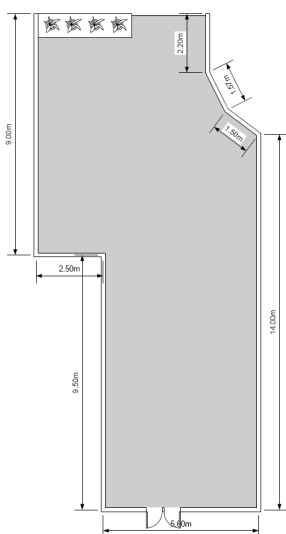
T: +41 (0)27 966 88 88 > F: +41 (0)27 966 88 99 > [www.montcervinpalace.ch](http://www.montcervinpalace.ch) > [mcp.events@seilerhotels.ch](mailto:mcp.events@seilerhotels.ch)



## MONT CERVIN PALACE

\*\*\*\*\*

Pool Foyer	L x B x H (in m)	m <sup>2</sup>						
	17.8 x 8.2/5.7 x 3.8	123	-	-	100	-	-	130



Der Empfangsraum auf dem Weg in den Alexander Seiler Saal. Bei schönem Wetter kann das Foyer mit dem Garten kombiniert werden.

*Reception room on the way to the Alexander Seiler Hall- by fine weather the foyer and garden can be combined for joint use.*

*La salle de réception non loin de la salle Alexander Seiler. Par beau temps, le foyer peut être combiné au jardin.*