



MONT CERVIN PALACE

\*\*\*\*\*



## BAR LE PETIT CERVIN









Mont Cervin Palace > Bahnhofstrasse 31 > CH-3920 Zermatt

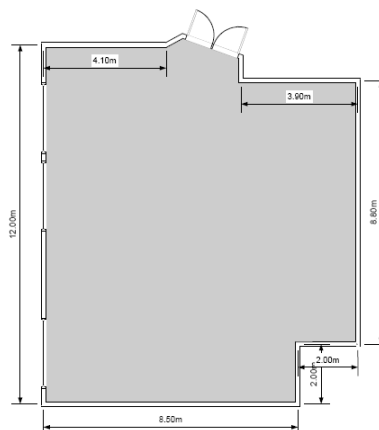
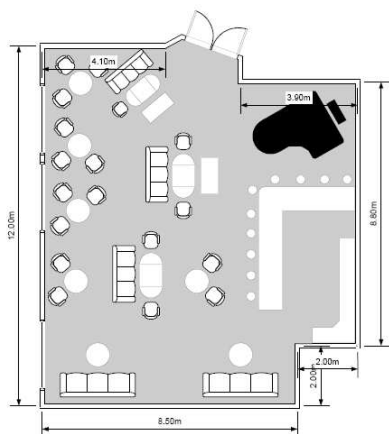
T: +41 (0)27 966 88 88 > F: +41 (0)27 966 88 99 > [www.montcervinpalace.ch](http://www.montcervinpalace.ch) > [mcp.events@seilerhotels.ch](mailto:mcp.events@seilerhotels.ch)



## MONT CERVIN PALACE

\*\*\*\*\*

Bar Le Petit Cervin	L x B x H (in m)	m <sup>2</sup>						
	11.8 x 10.7 x 2.60	110.4	-	-	-	-	-	55



Im 4. Stock vom Le Petit Cervin bietet die Bar einen atemberaubenden Blick auf die Kulisse der Mischabel Bergkette. Für Hockeymatch oder Tennisturnier – hier sitzen Sie in der ersten Reihe.

*The bar on the fourth floor of the Le Petit Cervin offers a stunning view of the Mischabel mountain chain. For hockey matches or tennis tournaments you are well and truly sitting pretty here!*

***Au 4<sup>e</sup> étage du Petit Cervin, le bar offre un panorama exceptionnel avec pour arrière-plan la chaîne des Mischabel. Pour les matchs de hockey ou tournois de tennis, vous êtes ici aux premières loges.***