



MONT CERVIN PALACE

\*\*\*\*\*



## ALEXANDER SEILER SAAL 1 & 2 & 3

Mont Cervin Palace > Bahnhofstrasse 31 > CH-3920 Zermatt

T: +41 (0)27 966 88 88 > F: +41 (0)27 966 88 99

[www.montcervinpalace.ch](http://www.montcervinpalace.ch) > [mcp.events@seilerhotels.ch](mailto:mcp.events@seilerhotels.ch)

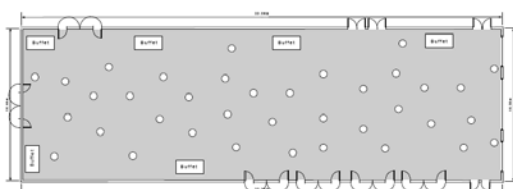
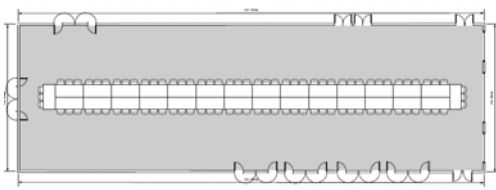
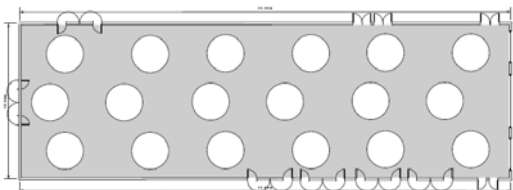
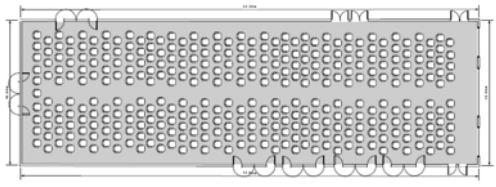
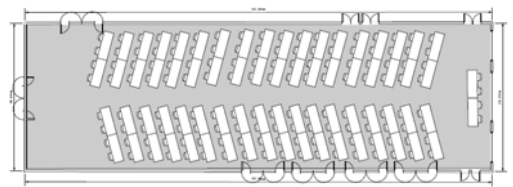
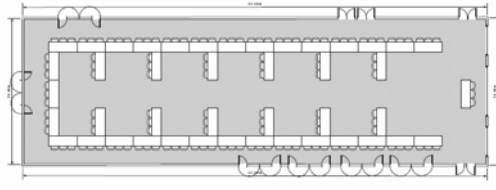
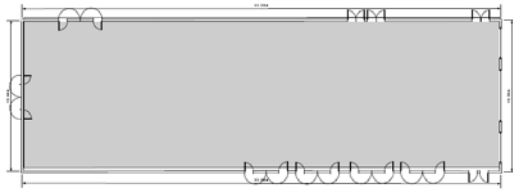




MONT CERVIN PALACE

\*\*\*\*\*

Alexander Seiler Saal 1 & 2 & 3	L x B x H (in m)	m <sup>2</sup>						
	33.0 x 11.0 x 3.5	363.0	120	220	360	240	130	360



Technische Infrastruktur auf Anfrage.  
*Technical infrastructure upon request.*  
**Infrastructure technique sur demande.**

Mont Cervin Palace > Bahnhofstrasse 31 > CH-3920 Zermatt  
T: +41 (0)27 966 88 88 > F: +41 (0)27 966 88 99  
[www.montcervinpalace.ch](http://www.montcervinpalace.ch) > [mcp.events@seilerhotels.ch](mailto:mcp.events@seilerhotels.ch)